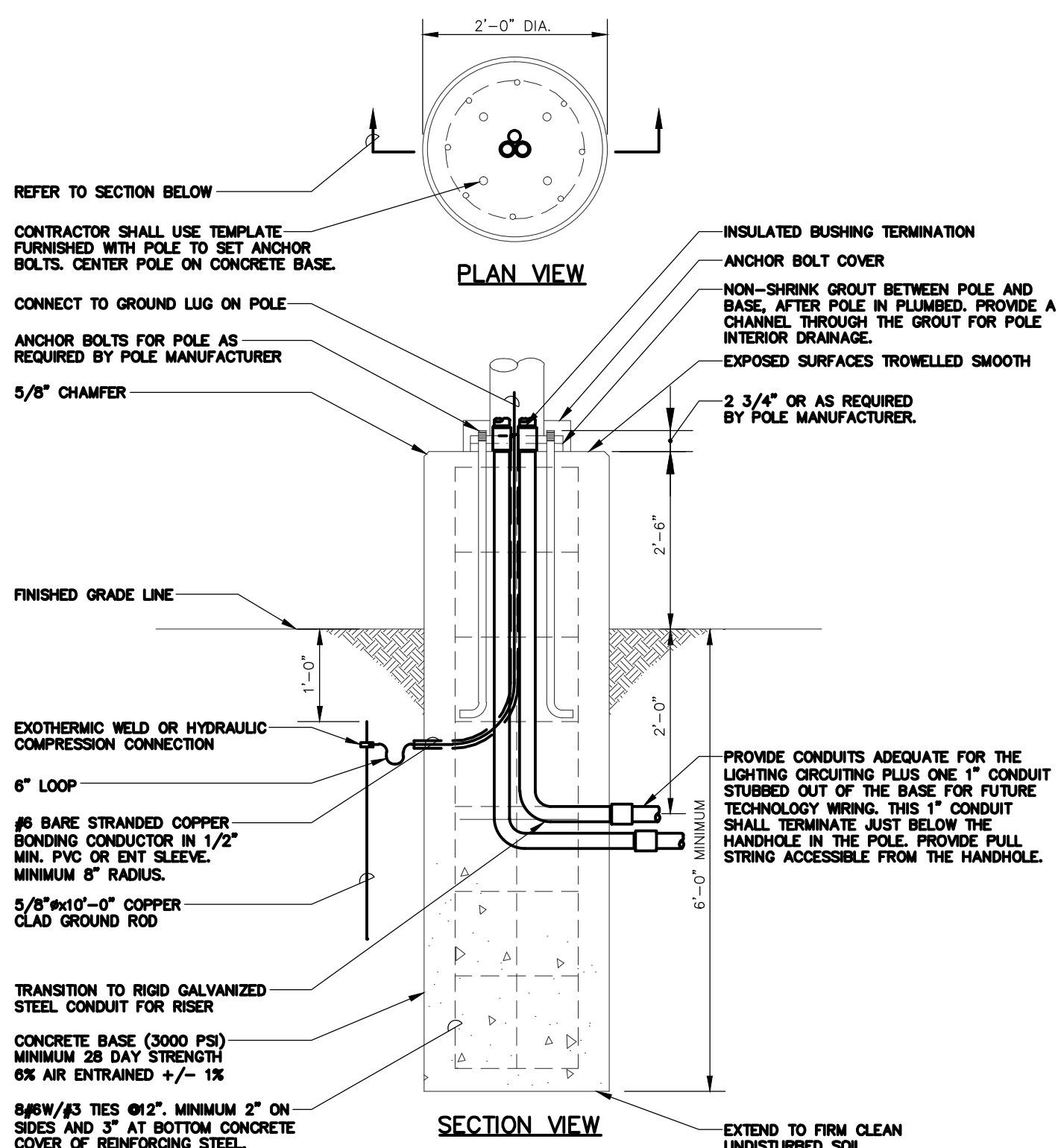
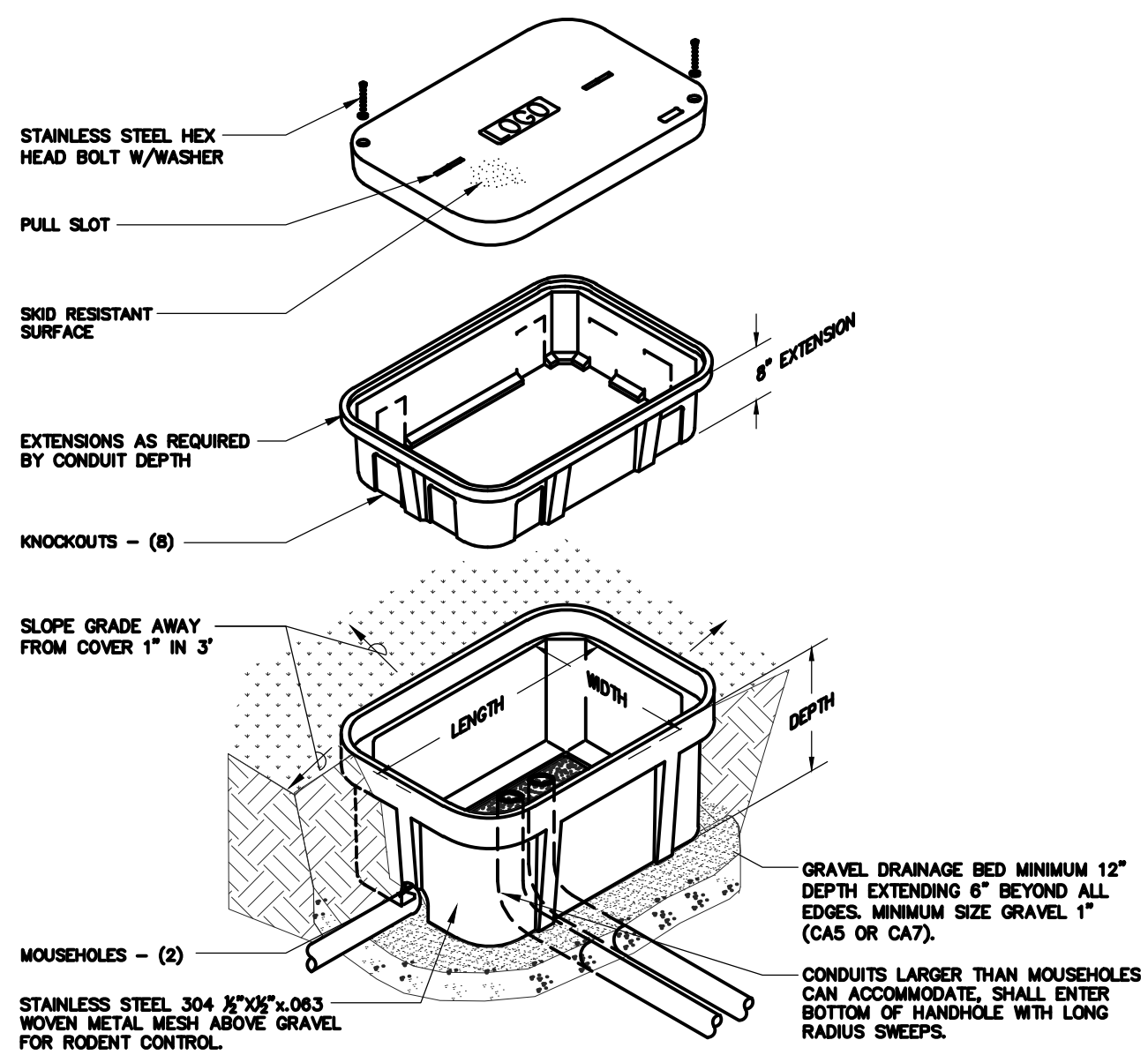


GENERAL ELECTRICAL EQUIPMENT SCHEDULE			
THE SYMBOLS AND THE EQUIPMENT SCHEDULE ARE FOR THE CONVENIENCE OF THE CONTRACTOR. EACH CONTRACTOR SHALL BE RESPONSIBLE FOR VERIFICATION OF QUANTITIES AND SHALL FURNISH ALL MATERIAL REQUIRED, WHETHER SPECIFIED OR NOT, TO PRODUCE A SATISFACTORY WORKING SYSTEM.			
CATALOG NUMBERS SHALL NOT BE CONSIDERED COMPLETE BUT ARE GIVEN ONLY TO AID THE CONTRACTOR IN THE SEARCH FOR MATERIAL. NO MATERIAL SHALL BE ORDERED BY MANUFACTURER AND CATALOG NUMBER ONLY. EACH CONTRACTOR SHALL FIRST OBTAIN THE COMPLETE DESCRIPTION OF THE MATERIAL ON THESE DRAWINGS AND SPECIFICATIONS. THE FIRST MANUFACTURER LISTED IS THE BASIS OF DESIGN. "STANDARD COLOR" INDICATES FACTORY FINISH AVAILABLE AT NO ADDITIONAL CHARGE.			
ITEM NO.	SYMBOL	DESCRIPTION	APPROVED MANUFACTURERS
1	HL-1	HANDHOLE, COMPOSITE POLYMER CONCRETE BODY AND COVER, STAINLESS STEEL HARDWARE, BOLTED NON-SKID COVER RATED FOR ALLOY LB. DESIGN LOAD OCCASIONAL, NON-DELIBERATE VEHICULAR TRAFFIC. STACK UNITS TO ACHIEVE DEPTH SHOWN ON PLANS. UNITS IN LANDSCAPED AREAS SHALL BE GREEN IN COLOR. 11"W, 18"L, 18"D	HUBBELL/QUAZITE P0118B1B P0118A1Q CARGON INDUSTRIES ARMORCAST HIGHLINE PRODUCTS SYNERTECH

LUMINAIRE SCHEDULE													
(MTO) MOUNTING:		(Type) LAMP TECHNOLOGY:		(L/L) LENS/SLOUVER:									
RE - RECESSED SP - SUSPENDED PL - POLE O - OTHER (SEE DESCRIPTION)		LED - LIGHT EMITTING DIODE		C - OTHER (SEE DESCRIPTION)									
		(TYPE) BALLAST:		(TYPE) BALLAST:									
		DIM07- LINE DIMMING BALLAST DIM10- 0-10V DIMMING BALLAST		EB- ELECTRONIC BALLAST MV- MULTI-VOLTAGE ELECTRONIC 120V-277V									
CATALOG NUMBER SHALL NOT BE CONSIDERED COMPLETE AND MATERIAL SHALL NOT BE ORDERED BY MANUFACTURER AND CATALOG NUMBER ONLY. THE COMPLETE DESCRIPTION AND THE SPECIFICATION SHALL BE COORDINATED WITH THE CATALOG NUMBER TO DETERMINE THE EXACT MATERIAL AND ACCESSORIES TO BE ORDERED. THE FIRST MANUFACTURER LISTED IS THE BASIS FOR DESIGN.													
REFER TO SPECIFICATION SECTIONS LIGHTING 26 51 00 FOR ADDITIONAL INFORMATION AND REQUIREMENTS.													
ALL LAMPS FOR THIS PROJECT SHALL BE FURNISHED AND INSTALLED BY THE ELECTRICAL CONTRACTOR UNLESS OTHERWISE NOTED.													
LED LAMP COLOR RENDERING INDEX (CRI) AT OR ABOVE 85 FOR INTERIOR APPLICATIONS.													
ITEM	DESCRIPTION	L	W	H	DIA	MTG	TYPE	QTY	MODEL	VOLTS	TYPE	LA	APPROVED MANUFACTURER
S2	DUAL-HEAD SITE LUMINAIRE, ALUMINUM DIE-CAST HOUSING, PRECISION-MOLDED ACRYLIC LENS, FINISH SELECTION BY OWNER FROM STANDARD FINISHES, U.L. LISTED WET LOCATION. NORTH FACING HEAD: TYPE III MEDIUM DISTRIBUTION. SOUTH FACING HEAD: FORWARD THROW MEDIUM DISTRIBUTION.	26"	13"	7"	Ø 180"	PL	LED	1	MAX 95 WATT MINIMUM 8,800 LUMENS 4000K 70 CRI PER HEAD	MV	O	LITHONIA D-SERIES DSX0-LED-40C-700-40K-T3M MVOLT-SPA DSX0-LED-40C-700-40K-TFTM MVOLT-SPA	LITHONIA D-SERIES DSX0-LED-40C-700-40K-T3M MVOLT-SPA DSX0-LED-40C-700-40K-TFTM MVOLT-SPA
S2	POLE 25'-0" SQUARE STRAIGHT STEEL POLE IN SAME FINISH AS S2 HEAD, 7 GAUGE, 0.1793" WALL THICKNESS, ANCHOR BASE, INTERNAL VIBRATION DAMPENER. PROVIDE STANDARD HANDHOLE LOCATED AT 1'-6" ABOVE POLE BASE.	4"	4"	25'-0"									LITHONIA SSS-25-4G-DM28AS-FDLXX MANUFACTURER OF S2
S3	DUAL-HEAD SITE LUMINAIRE, ALUMINUM DIE-CAST HOUSING, PRECISION-MOLDED ACRYLIC LENS, FINISH SELECTION BY OWNER FROM STANDARD FINISHES, U.L. LISTED WET LOCATION. BOTH HEADS: FORWARD THROW MEDIUM DISTRIBUTION.	26"	13"	7"	Ø 180"	PL	LED	1	MAX 95 WATT MINIMUM 8,800 LUMENS 4000K 70 CRI PER HEAD	MV	O	LITHONIA D-SERIES DSX0-LED-40C-700-40K-T3M MVOLT-SPA DSX0-LED-40C-700-40K-TFTM MVOLT-SPA	LITHONIA D-SERIES DSX0-LED-40C-700-40K-T3M MVOLT-SPA DSX0-LED-40C-700-40K-TFTM MVOLT-SPA
S3	POLE 25'-0" SQUARE STRAIGHT STEEL POLE IN SAME FINISH AS S3 HEAD, 7 GAUGE, 0.1793" WALL THICKNESS, ANCHOR BASE, INTERNAL VIBRATION DAMPENER. PROVIDE STANDARD HANDHOLE LOCATED AT 1'-6" ABOVE POLE BASE.	4"	4"	25'-0"									LITHONIA SSS-25-4G-DM28AS-FDLXX MANUFACTURER OF S3
S4	DUAL-HEAD SITE LUMINAIRE, ALUMINUM DIE-CAST HOUSING, PRECISION-MOLDED ACRYLIC LENS, FINISH SELECTION BY OWNER FROM STANDARD FINISHES, U.L. LISTED WET LOCATION. 25'-0" SQUARE STRAIGHT STEEL POLE IN SAME FINISH, ANCHOR BASE, INTERNAL VIBRATION DAMPENER. NORTH FACING HEAD: TYPE III MEDIUM DISTRIBUTION. SOUTH FACING HEAD: TYPE II MEDIUM DISTRIBUTION.	26"	13"	7"	Ø 180"	PL	LED	1	MAX 95 WATT MINIMUM 8,800 LUMENS 4000K 70 CRI PER HEAD	MV	O	LITHONIA D-SERIES DSX0-LED-40C-700-40K-T3M MVOLT-SPA DSX0-LED-40C-700-40K-T2M MVOLT-SPA	LITHONIA D-SERIES DSX0-LED-40C-700-40K-T3M MVOLT-SPA DSX0-LED-40C-700-40K-T2M MVOLT-SPA
S4	POLE 25'-0" SQUARE STRAIGHT STEEL POLE IN SAME FINISH AS S4 HEAD, 7 GAUGE, 0.1793" WALL THICKNESS, ANCHOR BASE, INTERNAL VIBRATION DAMPENER. PROVIDE STANDARD HANDHOLE LOCATED AT 1'-6" ABOVE POLE BASE.	4"	4"	25'-0"									LITHONIA SSS-25-4G-DM28AS-FDLXX MANUFACTURER OF S4
S5	SINGLE-HEAD SITE LUMINAIRE, ALUMINUM DIE-CAST HOUSING, PRECISION-MOLDED ACRYLIC LENS, FINISH SELECTION BY OWNER FROM STANDARD FINISHES, U.L. LISTED WET LOCATION. 25'-0" SQUARE STRAIGHT STEEL POLE IN SAME FINISH, ANCHOR BASE, INTERNAL VIBRATION DAMPENER. HEAD: TYPE III MEDIUM DISTRIBUTION.	26"	13"	7"		PL	LED	1	MAX 95 WATT MINIMUM 8,800 LUMENS 4000K 70 CRI	MV	O	LITHONIA D-SERIES DSX0-LED-40C-700-40K-T3M MVOLT-SPA	MCGRAW-EDISON GALLEON KIM ALTITUDE GARDCO PUREFORM VISIONAIRE VLX BEACON VIPER
S5	POLE 25'-0" SQUARE STRAIGHT STEEL POLE IN SAME FINISH AS S5 HEAD, 7 GAUGE, 0.1793" WALL THICKNESS, ANCHOR BASE, INTERNAL VIBRATION DAMPENER. PROVIDE STANDARD HANDHOLE LOCATED AT 1'-6" ABOVE POLE BASE.	4"	4"	25'-0"									LITHONIA SSS-25-4G-DM19AS-FDLXX MANUFACTURER OF S5
S6	SINGLE-HEAD SITE LUMINAIRE, ALUMINUM DIE-CAST HOUSING, PRECISION-MOLDED ACRYLIC LENS, FINISH SELECTION BY OWNER FROM STANDARD FINISHES, U.L. LISTED WET LOCATION. 25'-0" SQUARE STRAIGHT STEEL POLE IN SAME FINISH, ANCHOR BASE, INTERNAL VIBRATION DAMPENER. HEAD: TYPE II MEDIUM DISTRIBUTION.	26"	13"	7"		PL	LED	1	MAX 95 WATT MINIMUM 8,800 LUMENS 4000K 70 CRI	MV	O	LITHONIA D-SERIES DSX0-LED-40C-700-40K-T2M MVOLT-SPA	MCGRAW-EDISON GALLEON KIM ALTITUDE GARDCO PUREFORM VISIONAIRE VLX BEACON VIPER
S6	POLE 25'-0" SQUARE STRAIGHT STEEL POLE IN SAME FINISH AS S6 HEAD, 7 GAUGE, 0.1793" WALL THICKNESS, ANCHOR BASE, INTERNAL VIBRATION DAMPENER. PROVIDE STANDARD HANDHOLE LOCATED AT 1'-6" ABOVE POLE BASE.	4"	4"	25'-0"									LITHONIA SSS-25-4G-DM19AS-FDLXX MANUFACTURER OF S6
ALTERNATE BID #1													
SSA	SINGLE-HEAD SITE LUMINAIRE, ALUMINUM DIE-CAST HOUSING, PRECISION-MOLDED ACRYLIC LENS, FINISH SELECTION BY OWNER FROM STANDARD FINISHES, U.L. LISTED WET LOCATION. 25'-0" SQUARE STRAIGHT STEEL POLE IN SAME FINISH, ANCHOR BASE, INTERNAL VIBRATION DAMPENER. HEAD: TYPE III MEDIUM DISTRIBUTION.	26"	13"	7"		PL	LED	1	MAX 95 WATT MINIMUM 8,800 LUMENS 4000K 70 CRI	MV	O	LITHONIA D-SERIES DSX0-LED-40C-700-40K-T3M MVOLT-SPA	MCGRAW-EDISON GALLEON KIM ALTITUDE GARDCO PUREFORM VISIONAIRE VLX BEACON VIPER
SSA	POLE 25'-0" SQUARE STRAIGHT STEEL POLE IN SAME FINISH AS SSA HEAD, 7 GAUGE, 0.1793" WALL THICKNESS, ANCHOR BASE, INTERNAL VIBRATION DAMPENER. PROVIDE STANDARD HANDHOLE LOCATED AT 1'-6" ABOVE POLE BASE.	4"	4"	25'-0"									LITHONIA SSS-25-4G-DM19AS-FDLXX MANUFACTURER OF SSA
ALTERNATE BID #2													
STA	LED RETROFIT OF EXISTING DECORATIVE FIXTURE, TYPE V DISTRIBUTION.					EX-PL	LED	1	MAX 80 WATT 5000K	MV	N		HOLOPHANE GRANVILLE OVIDRETRO-80-8K-AS-S-U-S



1 EXTENDED POLE BASE DETAIL
NO SCALE



2 EXTERIOR HANDHOLE DETAIL
NO SCALE

- NOTES:
1. ALL DIMENSIONS ARE NOMINAL INSIDE CLEARANCES.
 2. ALL SPLICES OR DEVICES IN HANDHOLE SHALL BE SUBMERSIBLE.
 3. SEAL ALL CONDUIT ENDS WITH DUCTSEAL.

ELECTRICAL LIGHTING SYMBOL LIST *	
SYMBOL:	DESCRIPTION:
REFER TO LUMINAIRE SCHEDULE FOR DIMENSIONS AND TYPES	
○	IN-GRADE UPLIGHT
□	EXTERIOR WALL-PAK LUMINAIRE
▽	GROUND MOUNTED FLOOD LUMINAIRE
□	POLE MOUNTED LUMINAIRE - (1) HEAD
□	POLE MOUNTED LUMINAIRE - (2) HEAD
○	POLE MOUNTED LUMINAIRE - (1) HEAD

ELECTRICAL POWER SYMBOL LIST *	
SYMBOL:	DESCRIPTION:
⊕	GROUND FAULT DUPLEX RECEPTACLE
⊕	ELECTRICAL CONNECTION, WALL MOUNTED
⊕	ELECTRICAL CONNECTION, CEILING OR FLOOR MOUNTED
⊕	JUNCTION BOX, WALL MOUNTED
⊕	JUNCTION BOX, CEILING OR FLOOR MOUNTED
⊕	STARTER OR VARIABLE FREQUENCY DRIVE (VFD)
⊕	MANUAL MOTOR STARTER
⊕	DISCONNECT SWITCH
⊕	COMBINATION STARTER / DISCONNECT
⊕	TRANSFORMER
⊕	SURFACE MOUNTED PANELBOARD

ELECTRICAL DEMOLITION NOTES:

1. THE ELECTRICAL DRAWINGS INDICATE EXISTING ELECTRICAL ITEMS TO BE REMOVED. THE DRAWINGS ARE INTENDED TO INDICATE THE SCOPE OF WORK REQUIRED AND DO NOT INDICATE EVERY BOX, CONDUIT, OR WIRE THAT MUST BE REMOVED. THE CONTRACTOR SHALL VISIT THE SITE PRIOR TO SUBMITTING A BID AND VERIFY EXISTING CONDITIONS.
2. ELECTRICAL ITEMS (I.E., LIGHTING FIXTURES, RECEPTACLES, SWITCHES, ETC.) REMOVED AND NOT RELOCATED REMAIN THE PROPERTY OF THE OWNER. THE CONTRACTOR SHALL BE RESPONSIBLE FOR THE DISPOSAL OF MATERIAL THE OWNER DOES NOT WANT TO REUSE OR RETAIN (I.E., FOR MAINTENANCE PURPOSES).
3. THE CONTRACTOR SHALL OBTAIN APPROVAL FROM THE OWNER BEFORE TURNING OFF POWER TO CIRCUITS, FEEDERS, PANELS, ETC. COORDINATE ALL OUTAGES WITH OWNER. CONDUIT CONCEALED UNDER GROUND MAY BE ABANDONED IN PLACE IF NOT AFFECTED BY OTHER CONSTRUCTION.
4. EQUIPMENT REMOVAL IN CERTAIN LOCATIONS MAY REQUIRE THE INSTALLATION OF A JUNCTION BOX TO RECONNECT CIRCUITS THAT REMAIN IN OPERATION. EXTEND CONDUIT AND WIRING AS REQUIRED TO MAINTAIN POWER TO REMAINING EQUIPMENT.
5. BALLASTS MANUFACTURED PRIOR TO 1980 CONTAIN PCBs AND SHALL BE DISPOSED OF BY A FEDERAL OR STATE E.P.A. APPROVED METHOD AND IN ACCORDANCE WITH SPECIFICATIONS.
6. HID AND FLUORESCENT LAMPS CONTAIN MERCURY AND SHALL BE DISPOSED OF BY A FEDERAL OR STATE E.P.A. APPROVED METHOD AND IN ACCORDANCE WITH SPECIFICATIONS.

GENERAL ELECTRICAL NOTES:

1. "1/300" INDICATES DETAIL NUMBER/SHEET NUMBER.
2. ~~HL-1~~ INDICATES ELECTRICAL EQUIPMENT DEFINED IN ELECTRICAL SCHEDULES. REFER TO DRAWINGS CONTAINING ELECTRICAL SCHEDULES. PERMANENT NAMEPLATE SHALL MATCH FINAL EQUIPMENT NOMENCLATURE, NOT ELECTRICAL EQUIPMENT TAG NAME, REFER TO SPECIFICATIONS.
3. INDICATES KEYED NOTE USED TO DESCRIBE ADDITIONAL INFORMATION OF WORK REQUIRED, SPECIFIC TO THE SHEET AND/OR DETAIL IT IS SHOWN WITH.
4. ALL ELECTRICAL CONDUCTORS SHALL BE COPPER.
5. ABBREVIATION KEY:
C CONDUIT
TYP TYPICAL
6. LINE TYPE KEY:
— NEW WORK BY THIS CONTRACTOR (DARK SOLID LINE)
- - - NEW WORK UNDERFLOOR OR UNDERGROUND BY THIS CONTRACTOR (DARK LONG DASHED LINE)
- - - NEW WORK BY OTHERS AND/OR EXISTING TO REMAIN (LIGHT SOLID LINE)
- - - EXISTING TO BE REMOVED BY THIS CONTRACTOR (DARK SHORT DASHED LINE)

ELECTRICAL INSTALLATION NOTES:

1. COMMON NEUTRALS MAY NOT BE USED FOR BRANCH CIRCUITS.
2. ELECTRICAL EQUIPMENT SHALL BE MOUNTED TO AVOID IMPEDANCE OF OPERATION OF AND/OR ACCESS.
3. CONTRACTOR SHALL BE RESPONSIBLE FOR ALL OPENINGS REQUIRED IN WALLS. ALL OPENINGS SHALL BE REPAIRED TO MATCH EXISTING BY A QUALIFIED CONTRACTOR AT THE EXPENSE OF THIS CONTRACTOR. ALL CONDUITS THROUGH WALLS SHALL BE GROUDED OR SEALED INTO OPENINGS.
4. CONTRACTOR SHALL REMOVE AND REINSTALL ALL CEILING TILES AS REQUIRED FOR THE EXECUTION OF ELECTRICAL WORK THAT IS INSIDE THE BUILDING. CONTRACTOR SHALL REPLACE CEILING TILES WITH IDENTICAL MATERIAL WHERE DAMAGED BY THIS CONTRACTOR.

NO.	DATE	REVISION	DESCRIPTION

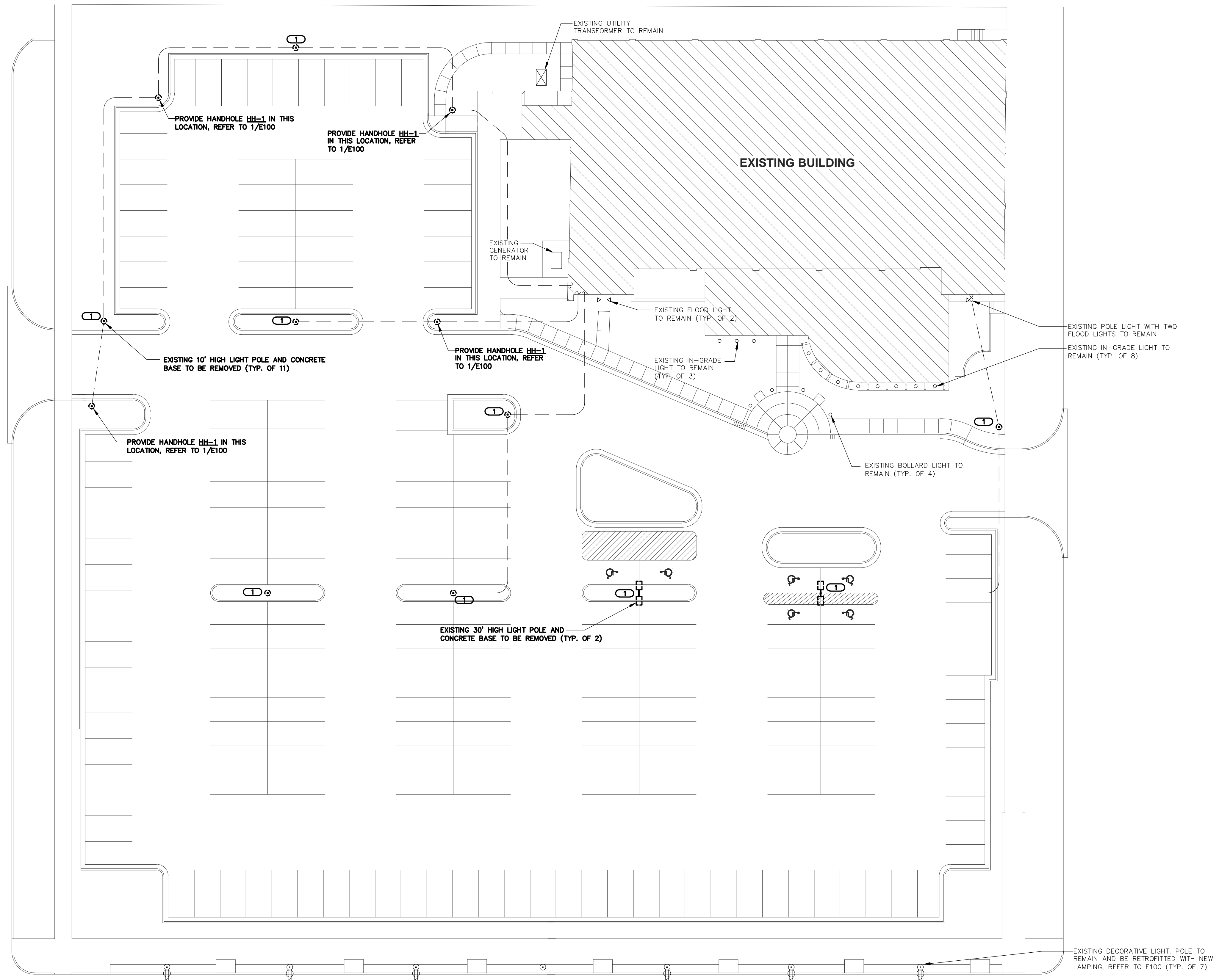
DESIGNED BY: **MATSNY** DRAWN BY: **BRIMCQ** CHECKED BY: **LEEVAN**

PROJECT NUMBER: **15.0122.00** DATE: **04.24.2015**

SHEET DESCRIPTION: **ELECTRICAL COVER SHEET**

SHEET NUMBER: **E000**

KJWW#15.0122.00 SCOTT COUNTY ADMINISTRATION BUILDING — EXTERIOR LIGHTING UPGRADES



GENERAL NOTES

- REFER TO E000 FOR DEMOLITION NOTES, GENERAL NOTES, AND SCHEDULES.
- REFER TO E001 FOR ELECTRICAL SPECIFICATIONS.
- COORDINATE ALL CONSTRUCTION ACTIVITIES AND SEQUENCE WITH OWNER.
- EXISTING UNDERGROUND PATHWAY LOCATIONS SHOWN ON THIS DRAWING ARE DERIVED FROM EXISTING DRAWINGS AND HAVE NOT BEEN FIELD VERIFIED. CONTRACTOR TO MAKE ALL NECESSARY ADJUSTMENTS OR PROVIDE ADDITIONAL HANDHOLES IN ORDER TO ENSURE CIRCUIT CONTINUITY TO ALL FIXTURE LOCATIONS BEING REUSED.

KEYNOTES

- EXISTING POLE LOCATION TO BE REUSED. SAVE ALL CIRCUIT WIRING AND CONDUIT FOR EXTENSION INTO NEW POLE BASE. REFER TO E100 FOR MORE INFORMATION.

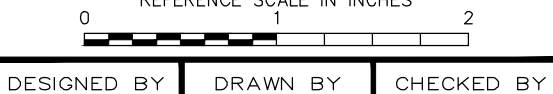
KJWW ENGINEERING CONSULTANTS
 The FUTURE Built SMARTER.[®]
 623 26TH AVENUE
 QUAD CITIES, IL 61201
 309.788.0673
 FAX: 309.786.5967
 www.kjww.com

STRUCTURAL | MECHANICAL | ELECTRICAL
 TECHNOLOGY | MEDICAL EQUIPMENT SOLUTIONS

**SCOTT COUNTY ADMINISTRATION BUILDING
 EXTERIOR LIGHTING UPGRADE
 DAVENPORT, IOWA**

NO.	DATE	REVISION DESCRIPTION

KJWW ENGINEERING RESERVES PROPRIETARY RIGHTS, INCLUDING COPYRIGHTS, TO THIS DRAWING AND THE DATA SHOWN THEREON. SAID DRAWING AND/OR DATA ARE THE EXCLUSIVE PROPERTY OF KJWW ENGINEERING AND SHALL NOT BE USED OR REPRODUCED FOR ANY OTHER PROJECT WITHOUT THE EXPRESS WRITTEN APPROVAL AND PARTICIPATION OF KJWW ENGINEERING. © 2015 KJWW, P.C. Illinois Design Firm Registration #184-000973



DESIGNED BY	DRAWN BY	CHECKED BY
MATSNY	BRIMCQ	LEEVAN

PROJECT NUMBER	DATE
15.0122.00	04.24.2015

SHEET DESCRIPTION
SITE PLAN - ELECTRICAL DEMOLITION

SHEET NUMBER

ED100

1 SITE PLAN - ELECTRICAL DEMOLITION
 SCALE: 1"=20'-0"

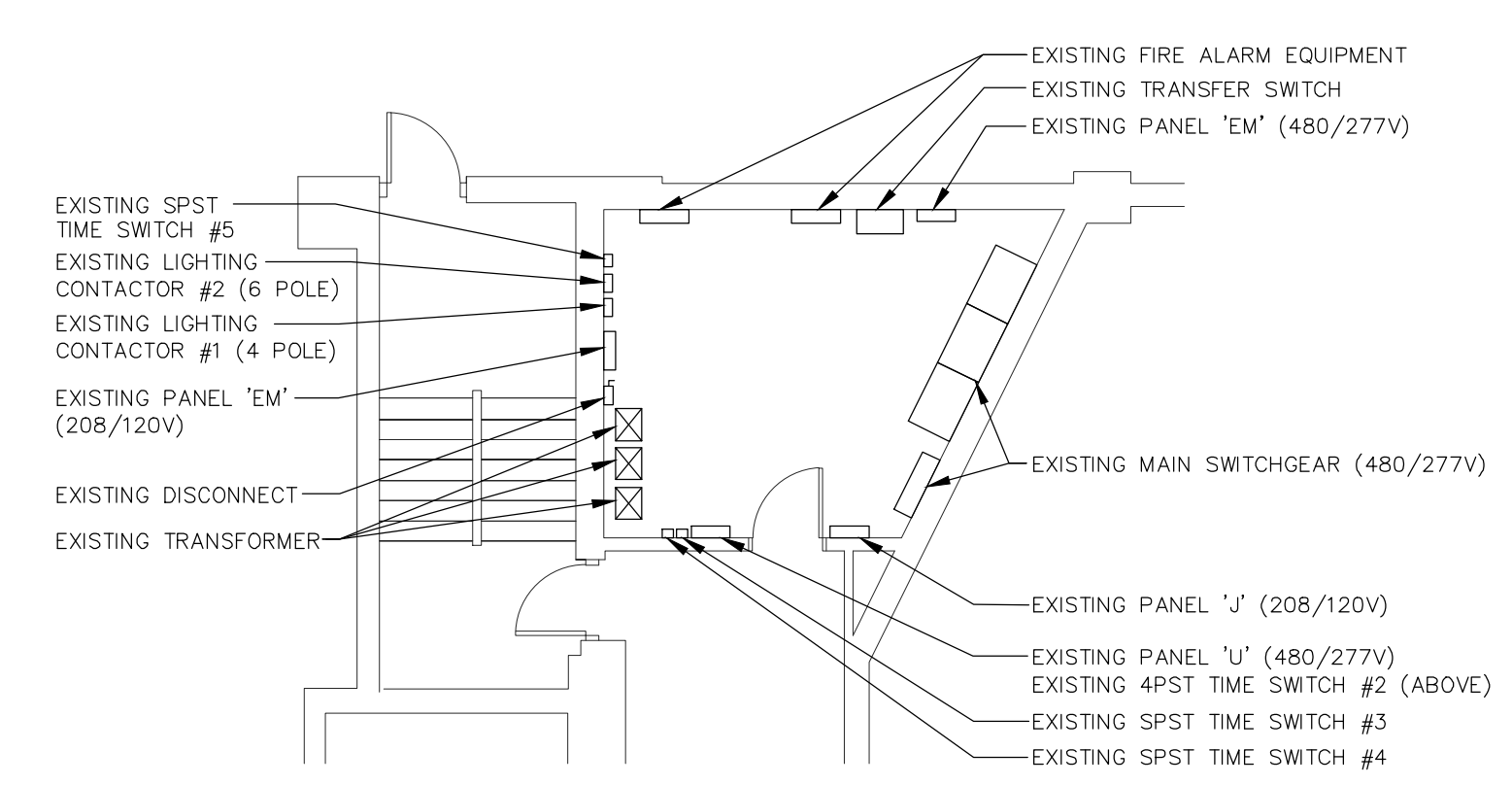
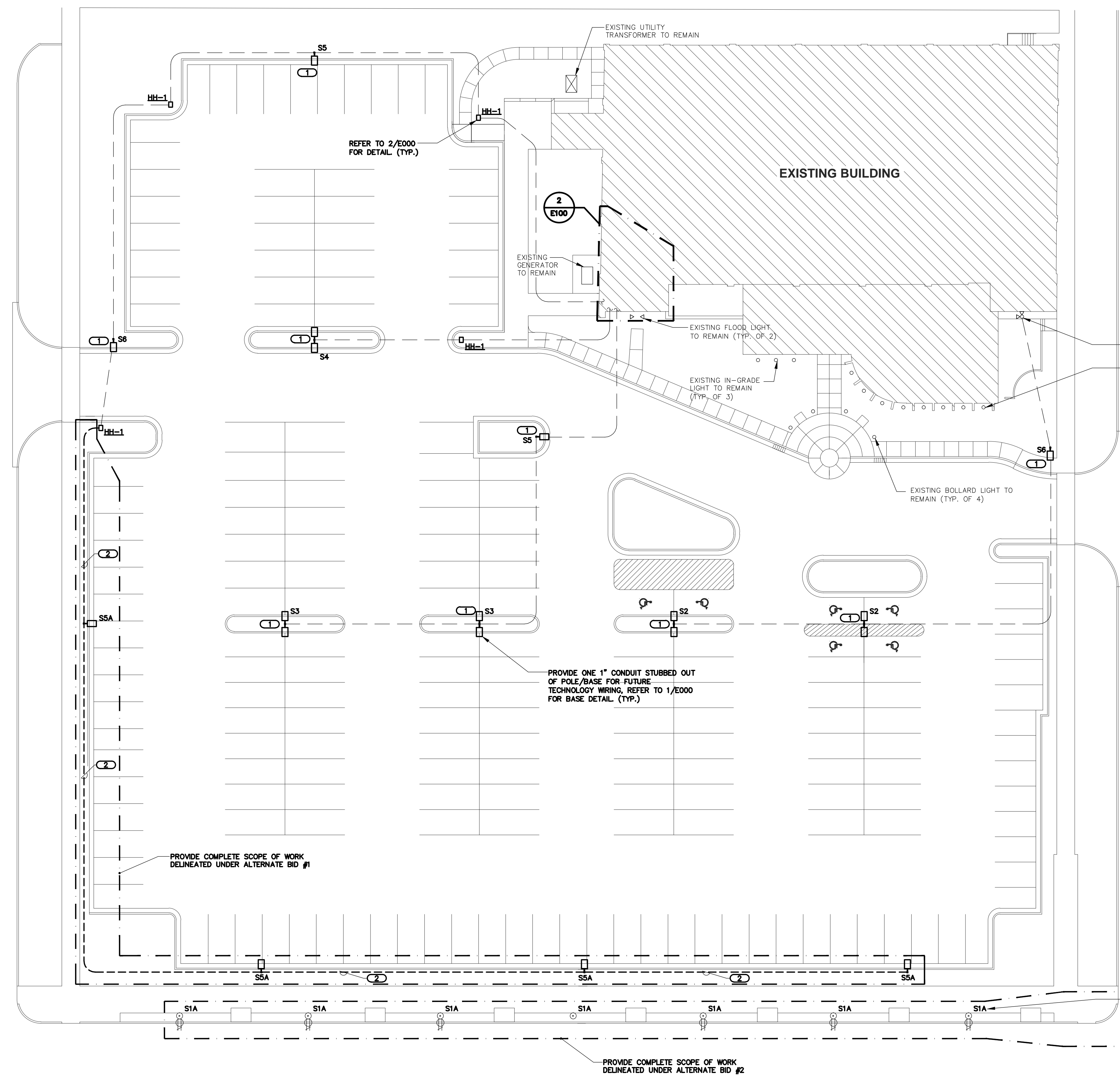
KJWW#15.0122.00 SCOTT COUNTY ADMINISTRATION BUILDING - EXTERIOR LIGHTING UPGRADES

KJWW ENGINEERING CONSULTANTS
 The FUTURE Built SMARTER.[®]
 623 26TH AVENUE
 QUAD CITIES, IL 61201
 309.788.0673
 FAX: 309.786.5967
 www.kjww.com

STRUCTURAL | MECHANICAL | ELECTRICAL
 TECHNOLOGY | MEDICAL EQUIPMENT SOLUTIONS

- GENERAL NOTES**
- REFER TO E000 FOR GENERAL NOTES AND SCHEDULES.
 - REFER TO E001 FOR ELECTRICAL SPECIFICATIONS.
 - REFER TO 1/E000 FOR LIGHT POLE BASE DETAIL WHICH IS APPLICABLE TO ALL NEW LIGHTING POLES ON THIS DRAWING.
- KEYNOTES**
- PROVIDE NEW POLE BASE FOR NEW LIGHT POLE. EXTEND EXISTING CIRCUIT WIRING AND CONDUIT UP INTO NEW POLE BASE IN SIZES TO MATCH EXISTING. REPAIR EXISTING PAVED SURFACE AROUND NEW POLE BASE AS REQUIRED, INCLUDING PROVIDING RE-STRIPING OF PARKING SPACES IF NECESSARY.
 - TRENCH EXISTING LANDSCAPED AREA TO EXTEND CIRCUIT WIRING TO NEW FIXTURES. ROUTE 2#6 IN 1"Ø GND IN 1" PVC CONDUIT. REPAIR THE GROUND TO PRE-CONSTRUCTION CONDITIONS, INCLUDING BACKFILL AND SOO.

**SCOTT COUNTY ADMINISTRATION BUILDING
 EXTERIOR LIGHTING UPGRADE
 DAVENPORT, IOWA**



2 ELECTRICAL ROOM PLAN
 SCALE: 1/8"=1'-0"

1 SITE PLAN - ELECTRICAL
 SCALE: 1"=20'-0"

NO.	DATE	REVISION DESCRIPTION

KJWW ENGINEERING RESERVES PROPRIETARY RIGHTS, INCLUDING COPYRIGHTS, TO THIS DRAWING AND THE DATA SHOWN THEREON. SAID DRAWING AND/OR DATA ARE THE EXCLUSIVE PROPERTY OF KJWW ENGINEERING AND SHALL NOT BE USED OR REPRODUCED FOR ANY OTHER PROJECT WITHOUT THE EXPRESS WRITTEN APPROVAL AND PARTICIPATION OF KJWW ENGINEERING. © 2015 KJWW, P.C. Illinois Design Firm Registration #184-000973

REFERENCE SCALE IN INCHES
 0 1 2

DESIGNED BY	DRAWN BY	CHECKED BY
MATSNY	BRIMCQ	LEEVAN

PROJECT NUMBER	DATE
15.0122.00	04.24.2015

SHEET DESCRIPTION
SITE PLAN - ELECTRICAL

SHEET NUMBER
E100